



MONTHLY MEMBERSHIP PROGRESS REPORT

District 324A1

Results as of: 11/30/2018

GMT: N S SANKAR

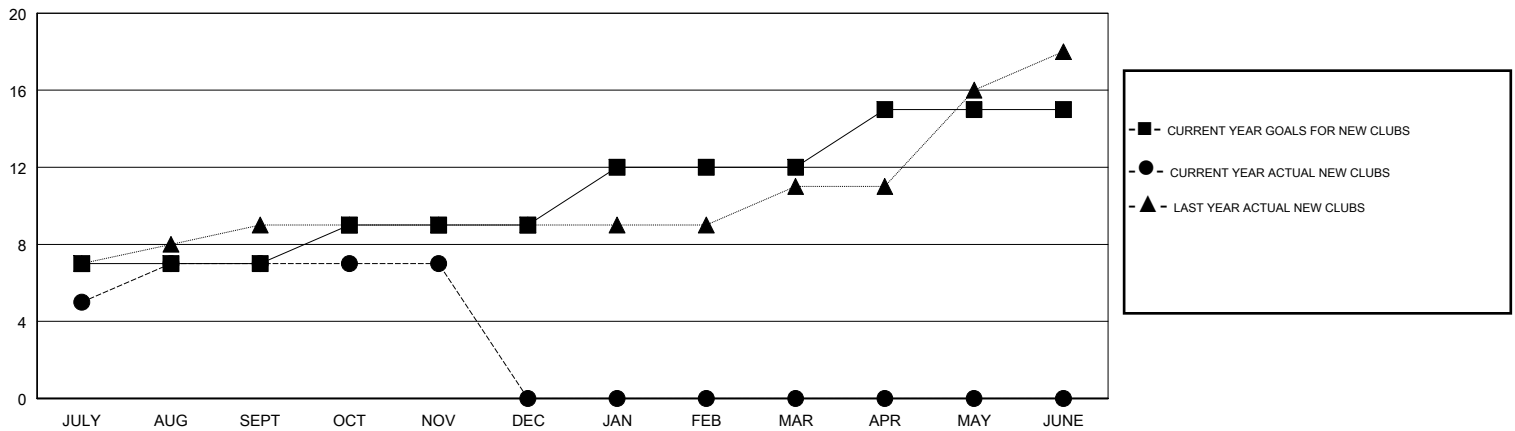
LOCATION INDIA

GMT CA

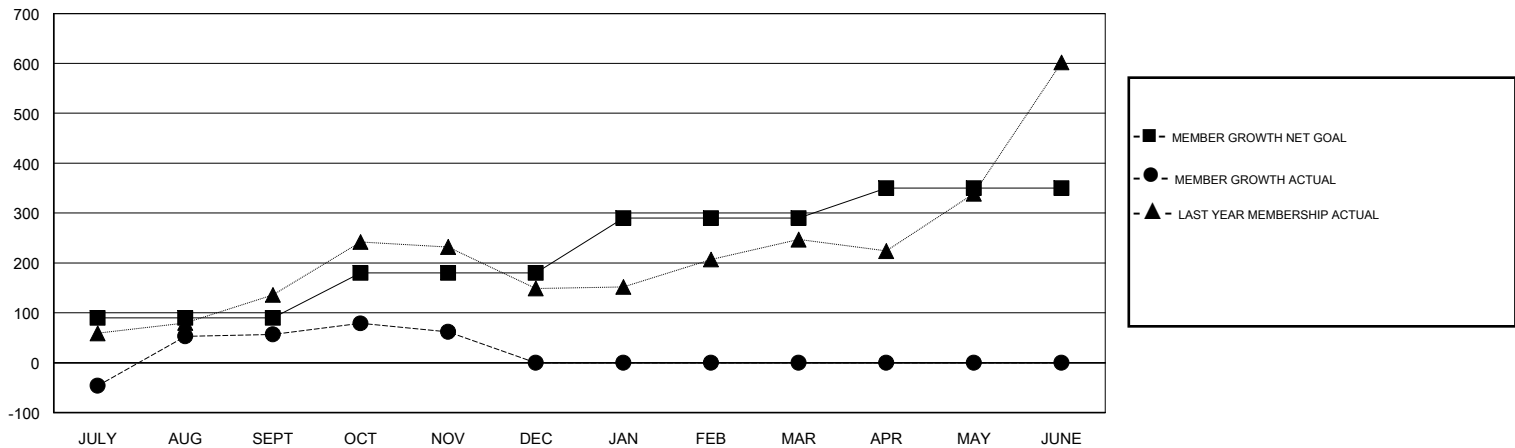
Clubs			
RESULTS FOR 2018-2019			
QUARTER	NEW CLUB GOAL	NEW CLUBS	DROPPED CLUBS
JULY/AUG/SEPT	7	7	0
OCT/NOV/DEC	2	0	0
JAN/FEB/MAR	3	0	0
APR/MAY/JUNE	3	0	0

Members			
RESULTS FOR 2018-2019			
QUARTER	MEMBER GROWTH NET GOAL	MEMBER GROWTH ACTUAL	DROPPED MEMBERS ACTUAL (including transfers)
JULY/AUG/SEPT	90	436	365
OCT/NOV/DEC	90	84	71
JAN/FEB/MAR	110	0	0
APR/MAY/JUNE	60	0	0

GOALS AND ACTUAL NEW CLUBS CUMULATIVE



GOALS AND ACTUAL MEMBERS CUMULATIVE



DROPPED CLUBS: 0	86 CLUBS OF 180 ADDED 1 OR MORE NEW MEMBERS	GENDER DISTRIBUTION MALE 4,448 (74.51%) FEMALE 1,522 (25.49%) Women Percentage Fiscal Year Goal: 20%
DROPPED MEMBERS DECEASED 2 CLUB CANCELLED 0 OTHER 434 TOTAL 436	CLICK HERE FOR CUMULATIVE MEMBERSHIP DATA	TOTAL FAMILY UNIT MEMBERS 1,788 FAMILY MEMBERS PAYING HALF DUES 964